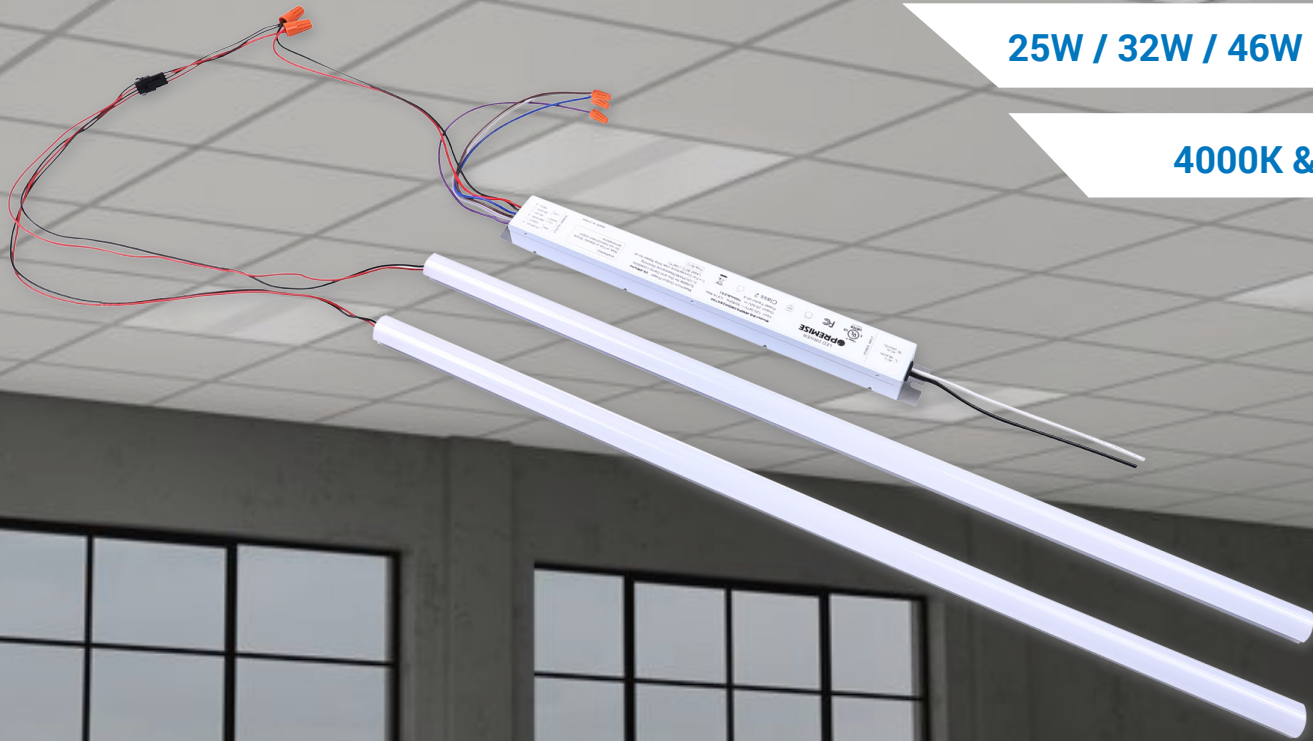


Quick and Painless Installation

Nominal 2' & 4' Strip Lengths

25W / 32W / 46W Models

4000K & 5000K



RK1-Series LED Linear Retrofit Kit



The RK1 Series LED Linear Retrofit Kit is the easiest and most versatile fluorescent bulb retrofit solution: a two-piece magnetic LED strip and driver kit that attaches directly to any existing linear fixture and bypasses the ballast for a quick installation.

The RK1 uses the housing of the existing fixture to limit excess waste and does not require above ceiling access to install. They are the fastest, most efficient way to upgrade fluorescent linear fixtures to long-lasting LED lighting.

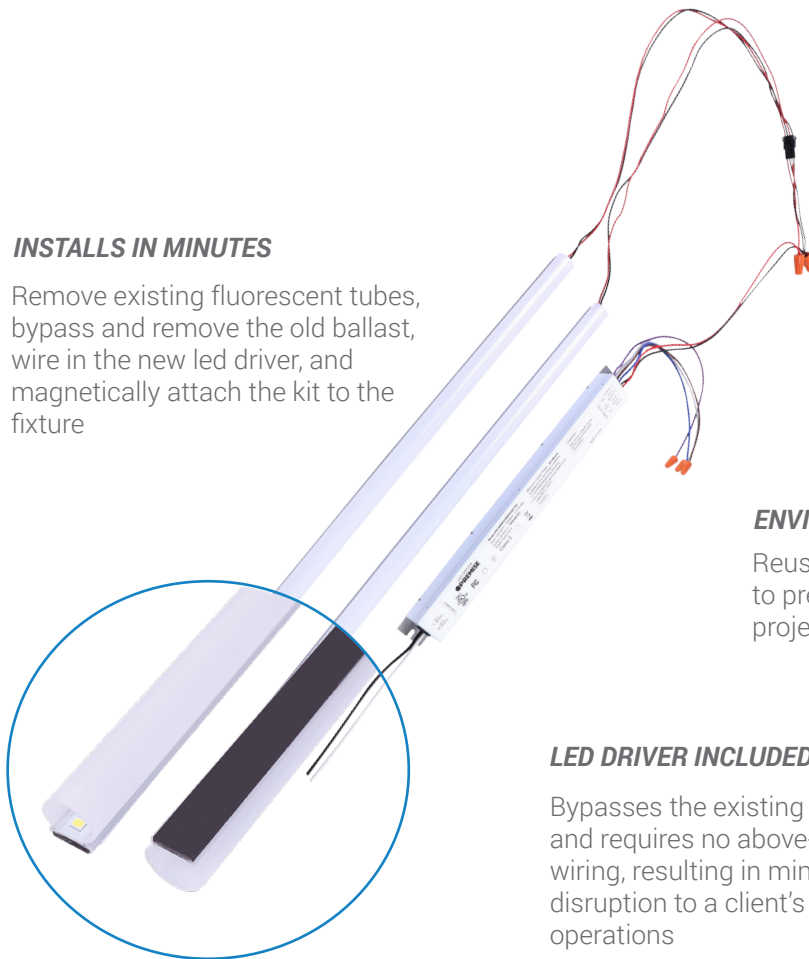
Key Features & Benefits

- Available in three popular lumen packages: 2,900 lm, 3,700 lm and 5,000 lm
- Snap-on magnetic makes installation easy and almost as simple as re-lamping!
- Nominal 2' and 4' linear strip kits make it easy to fit most troffers. Works up to 8 feet in length per kit and with metric troffers too!
- Damp Location listed for installation in approved Type IC or Non-IC recessed luminaires
- LED strips are covered by a curved frosted lens to ensure even light output and to eliminate the unsightly look of individual diodes
- Flicker-free and 0-10V dimmable
- Natural White (4000K) or Cool White (5000K)

WHY CHOOSE THIS KIT?

INSTALLS IN MINUTES

Remove existing fluorescent tubes, bypass and remove the old ballast, wire in the new led driver, and magnetically attach the kit to the fixture



LED STRIPS WITH FROSTED LENS

Replace existing fluorescent tubes with energy efficient, long-lasting LED strips that are attached to the existing fixture housing via built-in magnets

LED DRIVER INCLUDED

Bypasses the existing ballast and requires no above-ceiling wiring, resulting in minimal disruption to a client's daily operations

VERSATILE SIZING

Offered as nominal 2 x 2' and 2 x 4' strip kits means the RK1 can be used to retrofit troffers or other linear fixtures. Great solution for metric troffers!

Strip dimensions (actual):
 RK1-22* = 21 25/32" [593mm]
 RK1-24* = 43 7/16" [1103mm]

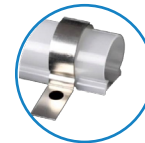
ENVIRONMENTALLY FRIENDLY

Reusing the existing fixture's housing helps to prevent unnecessary waste and keeps project disposal costs to a minimum

OPTIONAL ACCESSORIES



End caps help to reduce ingress of bugs and dust



Metal clips provide additional mounting security

Available Models

MODEL#	VOLTAGE	TOTAL WATTAGE	LUMENS	CRI	SIZE	CCT	DIMMING
RK1-22254-3	120-347V	25W	2,991 lm	80	2 x 2' STRIP KIT	4000K	0-10V
RK1-22255-3	120-347V	25W	3,050 lm	80	2 x 2' STRIP KIT	5000K	0-10V
RK1-24324-3	120-347V	32W	3,723 lm	80	2 x 4' STRIP KIT	4000K	0-10V
RK1-24325-3	120-347V	32W	3,750 lm	80	2 x 4' STRIP KIT	5000K	0-10V
RK1-24464-3	120-347V	46W	5,047 lm	80	2 x 4' STRIP KIT	4000K	0-10V
RK1-24465-3	120-347V	46W	5,100 lm	80	2 x 4' STRIP KIT	5000K	0-10V

Accessories

MODEL#	DESCRIPTION
RK1-CAPS	Set of four end caps that close up the end of the RK1 strips to reduce ingress of bugs and dust
RK1-CLIPS	Set of four metal mounting clips with self-tapping screws that provide additional way to secure RK1 strips

Specifications and dimensions subject to change without notice.