



Integrated Motion Sensor

Available in 40W & 60W

120-277V & 200-380V

Up to 7,600 lumen



# CF3-Series LED Garage Luminaire with Motion Sensor



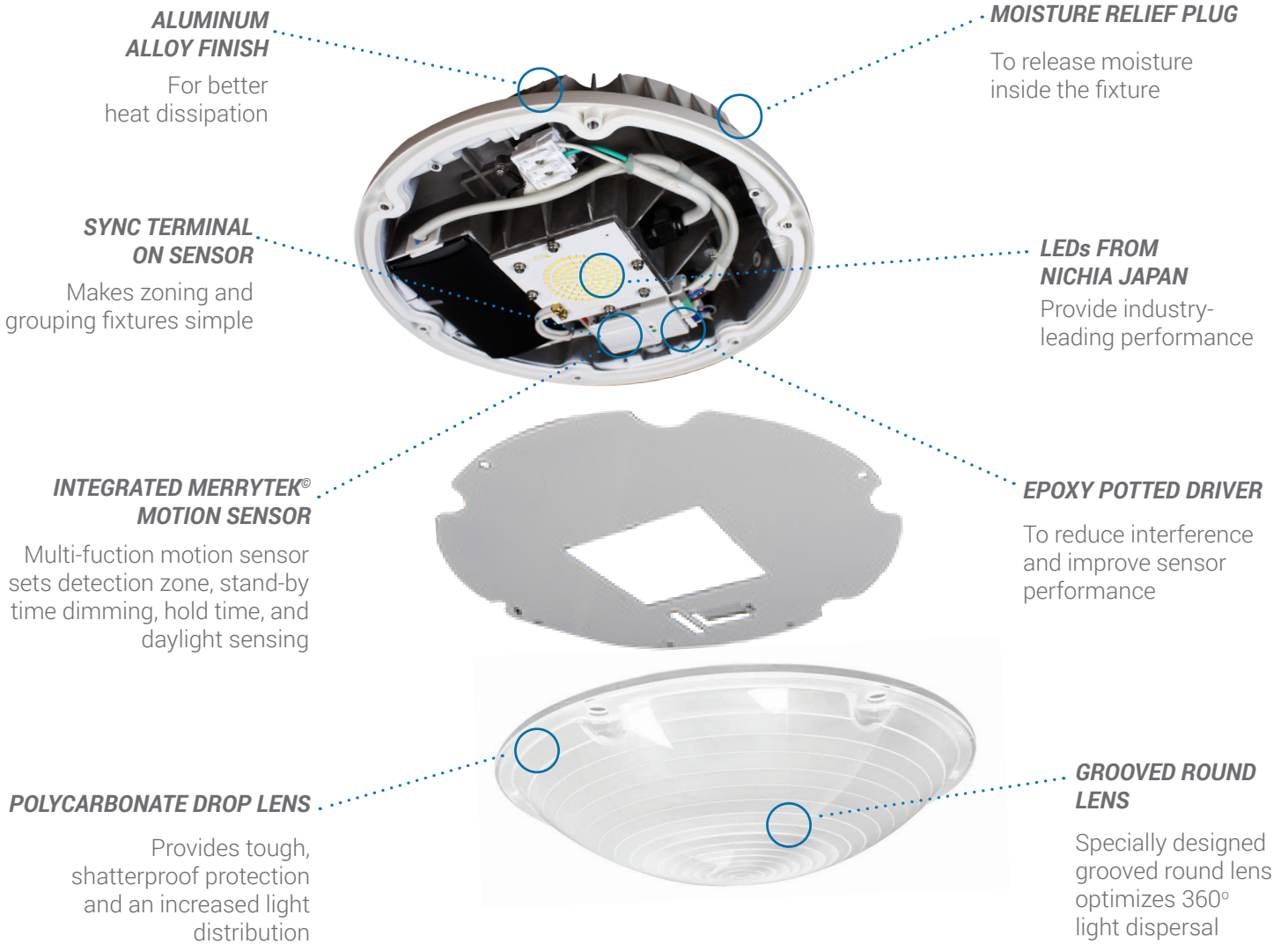
The CF3 Series is a next generation LED Canopy luminaire purpose-built for parking garages that boasts a specially designed fresnel lens to provide 360° light dispersal and an integrated motion sensor to detect occupancy and maximum efficiency.

Add Wet Location and IP65 ratings to this ultra-thin profile luminaire, and the CF3-Series quickly becomes your fixture of choice when a project requires maximum lateral lighting in low height, wet environments.

## Key Features & Benefits

- Integrated multi-function motion sensor sets detection zone, stand-by time, dimming, hold time
- High efficacy output with 123 Lumens per watt
- Moisture resistant Wet Location rated and IP65
- Epoxy potted driver to reduce interference
- 1-10V dimmable
- IP65 rated
- Pendant mounting with a 3/4" conduit and direct surface mounting
- Grooved fresnel lens specially engineered for 360° light dispersal
- NICHIA chips means commercial grade dependability

# WHY CHOOSE THIS FIXTURE?



## Available Models

MODEL #	VOLTAGE	WATTAGE	LUMEN	CRI	CCT	DIMMING	CONTROLS
<b>CF3-404-MS-1</b>	100-277VAC	40W	5150	≥86	4000K	1-10V Dimmable	Integrated Motion Sensor
<b>CF3-404-MS-2</b>	200-350VAC	40W	4949	≥87	4000K	1-10V Dimmable	Integrated Motion Sensor
<b>CF3-604-MS-1</b>	100-277VAC	60W	7677	≥86	4000K	1-10V Dimmable	Integrated Motion Sensor
<b>CF3-604-MS-2</b>	200-350VAC	60W	7098	≥86	4000K	1-10V Dimmable	Integrated Motion Sensor

Specifications and dimensions subject to change without notice.